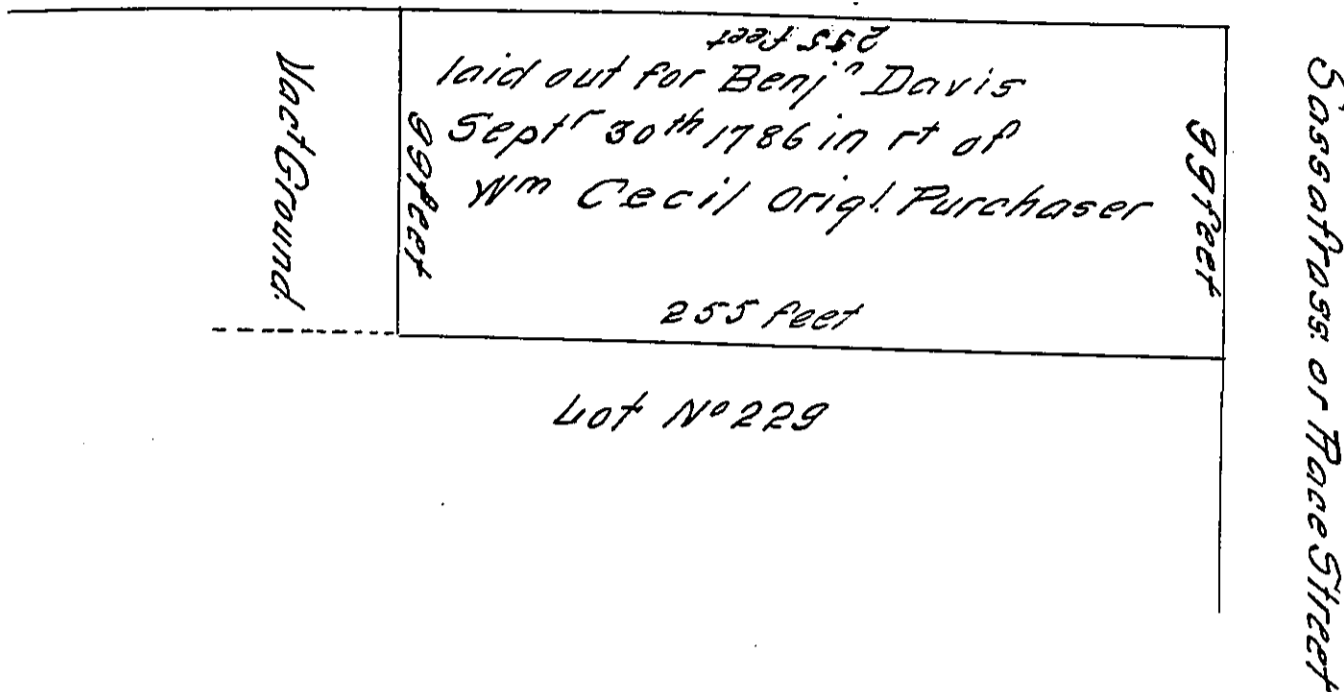


Eight Street from Delaware.



The above is a Draught of a Lot in the City of Philad^a Situate on Eighth Street from Delaw^e and Sassafras or Race Street Survey'd & laid out for Benj^a Davis of the City of Philad^a and in right of W^m Cecil of Long Combe in obl. Britain Pursuant to an order of the Hon^{ble} Cha^s Biddle Esq^r dated 22^d day of September 1786.

Jn^o Lukens S^c

IN TESTIMONY that the above is a copy of the original remaining on file in the Department of Internal Affairs of Pennsylvania, made conformably to an Act of Assembly approved the 16th day of February, 1833, I have hereunto set my Hand and caused the Seal of said Department to be affixed at Harrisburg, this Sixteenth day of January 1912

Avery Houch
Secretary of Internal Affairs.